

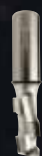
PUNTE PER PANTOGRAFO

Router Bits



Page
108

PUNTE PER PANTOGRAFO PL25
PL25 Router Bits



110

PUNTE PER PANTOGRAFO PL40
PL40 Router Bits



112

PUNTE PER PANTOGRAFO TRAKTOR
Traktor Router Bits



113

PUNTE PER PANTOGRAFO XP2
XP2 Router Bits



6

| | Page | |
|---|------|---|
| PUNTE PER PANTOGRAFO HP2 HP2 Router Bits | 114 |  |
| PUNTE PER PANTOGRAFO TOP2 TOP2 Router Bits | 116 |  |
| PUNTE PER PANTOGRAFO EVO EVO Router Bits | 117 |  |
| PUNTE PER PANTOGRAFO NESTING NESTING Router Bits | 118 |  |
| PUNTE PER PANTOGRAFO TOP HD TOP HD Router Bits | 119 |  |
| PUNTE PER PANTOGRAFO TOP R TOP R Router Bits | 120 |  |
| PUNTE PER PANTOGRAFO DR DR Router Bits | 121 |  |
| PUNTE PER PANTOGRAFO "SMART" "Smart" Straight Router Bits | 122 |  |
| PUNTE PER PANTOGRAFO SAGOMATE Profile Router Bits | 124 |  |

6 PUNTE PER PANTOGRAFO

CARATTERISTICHE TECNICHE Technical Features

PRESTAZIONI:

- OTTIMA
- BUONA
- ACCETTABILE

ESEMPIO:

- Prestazione: ottima
- 6-8 Velocità consigliata

PERFORMANCE:

- BEST
- GOOD
- ACCEPTABLE

EXAMPLE:

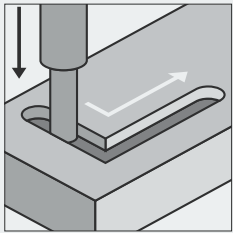
- Performance: best
- 6-8 Feeding speed

| | PL25 | PL40 | HP2 | HP4 | TOP DR BASIC | TOP DR PLUS | NESTING | TOP HD | SMART | TOP 2 | TOP R | XP 2 | TRAKTOR | EVO |
|----------------------------|------------|------------|-------------|-------------|--------------|-------------|-------------|-------------|-------|--------------|--------------|--------------|--------------|--------------|
| Numero di denti | 1+1 | 1+1 | 2+2 | 2+2 | 3/1+1 | 3/3 | 3 | 2/3 | 1/2 | 3 | 3 | 2+2 | 3/4 | 2 |
| Tipo di forante | HM | HM | HM/PCD | HM/PCD | HM | PCD | PCD | PCD | PCD | PCD | PCD | PCD | - | PCD |
| LEGNO MASSICCIO | ● 2-4 | ● 2-4 | ● 3-5 | ● 3-5 | ● 3-5 | ● 3-5 | ● 3-5 | ● 3-5 | ● | ● 6-8 | ● 6-8 | ● 6-8 | ●● 8-10 | ●● 8-10 |
| LAMELLARE | ● 4-6 | ● 4-6 | ●● 5-10 | ●● 5-10 | ● 5-10 | ● 5-10 | ● 5-10 | ● 5-10 | ● | ● 8-12 | ● 8-12 | ●● 8-12 | ●● 10-12 | ●● 10-12 |
| TRUCIOLARE | ●●● 6-8 | ●●● 6-8 | ●●● 8-20 | ●●● 8-20 | ●●● 8-20 | ●●● 8-20 | ●●● 8-20 | ●●● 8-20 | ●● | ●●● 12-30 | ●●● 12-30 | ●●● 12-30 | ●●● 14-32 | ●●● 14-32 |
| TRUCIOLARE PLACCATO | ●●● 4-6 | ●●● 4-6 | ●●● 5-10 | ●●● 5-10 | ●●● 5-10 | ●●● 5-10 | ●●● 5-10 | ●●● 5-10 | ●● | ●●● 8-12 | ●●● 8-12 | ●●● 8-12 | ●●● 10-14 | ●●● 10-14 |
| TRUCIOLARE MELAMINICO | ●●● 6-8 | ●●● 6-8 | ●●● 8-20 | ●●● 8-20 | ●●● 8-20 | ●●● 8-20 | ●●● 8-20 | ●●● 8-20 | ●● | ●●● 12-30 | ●●● 12-30 | ●●● 12-30 | ●●● 14-32 | ●●● 14-32 |
| TRUCIOLARE RIVESTITO CARTA | ●●● 4-6 | ●●● 4-6 | ●●● 5-10 | ●●● 5-10 | ●●● 5-10 | ●●● 5-10 | ●●● 5-10 | ●●● 5-10 | ●● | ●●● 8-12 | ●●● 8-12 | ●●● 8-12 | ●●● 14-32 | ●●● 14-32 |
| MDF GREZZO | ●●● 6-8 | ●●● 6-8 | ●●● 8-20 | ●●● 8-20 | ●●● 8-20 | ●●● 8-20 | ●●● 8-20 | ●●● 8-20 | ●● | ●●● 12-30 | ●●● 12-30 | ●●● 12-30 | ●●● 14-32 | ●●● 14-32 |
| MDF PLACCATO | ●●● 4-6 | ●●● 4-6 | ●●● 5-10 | ●●● 5-10 | ●●● 5-10 | ●●● 5-10 | ●●● 5-10 | ●●● 5-10 | ●● | ●●● 8-12 | ●●● 8-12 | ●●● 8-12 | ●●● 10-14 | ●●● 10-14 |
| MDF MELAMINICO | ●●● 6-8 | ●●● 6-8 | ●●● 8-20 | ●●● 8-20 | ●●● 8-20 | ●●● 8-20 | ●●● 8-20 | ●●● 8-20 | ●● | ●●● 12-30 | ●●● 12-30 | ●●● 12-30 | ●●● 14-32 | ●●● 14-32 |
| MDF RIVESTITO CARTA | ●●● 4-6 | ●●● 4-6 | ●●● 5-10 | ●●● 5-10 | ●●● 5-10 | ●●● 5-10 | ●●● 5-10 | ●●● 5-10 | ●● | ●●● 8-12 | ●●● 8-12 | ●●● 8-12 | ●●● 10-14 | ●●● 10-14 |
| MULTIPLY | ●●● 2-4 | ●●● 2-4 | ●●● 3-5 | ●●● 3-5 | ●● 3-5 | ●● 3-5 | ●●● 3-5 | ●●● 3-5 | ●●● | ●●● 6-8 | ●●● 6-8 | ●●● 6-8 | ●●● 8-10 | ●●● 8-10 |
| HPL, CPL, Trespa | ● 2-4 | ● 2-4 | ● 3-5 | ●● 3-5 | ●● 3-5 | ●● 3-5 | ●● 3-5 | ●● 3-5 | ●●● | ●●● 6-8 | ●●● 6-8 | ●● 6-8 | ●●● 8-10 | ●●● 8-10 |
| OSB | ●● 6-8 | ●● 6-8 | ●● 8-20 | ●● 8-20 | ●● 8-20 | ●● 8-20 | ●●● 8-20 | ●●● 8-20 | ●● | ●●● 12-30 | ●●● 12-30 | ●●● 12-30 | ●●● 14-32 | ●●● 14-32 |
| POLIURETANO RIGIDO | ● 2-4 | ● 2-4 | ● 3-5 | ●● 3-5 | ●● 3-5 | ●● 3-5 | ●● 3-5 | ●● 3-5 | ●●● | ●●● 6-8 | ●● 6-8 | ●● 6-8 | ●●● 8-10 | ●●● 8-10 |
| PLASTOMERO | ● 2-4 | ● 2-4 | ● 3-5 | ●● 3-5 | ●● 3-5 | ●● 3-5 | ●● 3-5 | ●● 3-5 | ●●● | ●●● 6-8 | ●● 6-8 | ●● 6-8 | ●●● 8-10 | ●●● 8-10 |
| P. BASE DI FIBRA DI VETRO | ● 2-4 | ● 2-4 | ● 3-5 | ●● 3-5 | ●● 3-5 | ●● 3-5 | ●● 3-5 | ●● 3-5 | ●●● | ●●● 6-8 | ●● 6-8 | ●● 6-8 | ●●● 8-10 | ●●● 8-10 |
| CORIAN, VARICOR | ● 2-4 | ● 2-4 | ● 3-5 | ●● 3-5 | ●● 3-5 | ●● 3-5 | ● 3-5 | ● 3-5 | ●●● | ● 6-8 | ● 6-8 | ●● 6-8 | ●●● 8-10 | ●●● 8-10 |
| PANNELLO CARTONGESSO | ●● 4-6 | ●● 4-6 | ●● 5-10 | ●●● 5-10 | ●● 5-10 | ●● 5-10 | ●●● 5-10 | ●●● 5-10 | ●●● | ●●● 8-12 | ●●● 8-12 | ●● 8-12 | ●●● 10-14 | ●●● 10-14 |

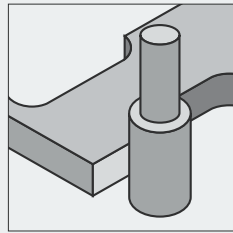
Router Bits



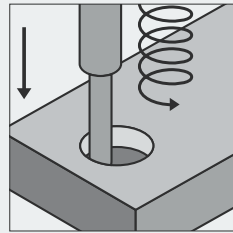
LAVORAZIONE Application



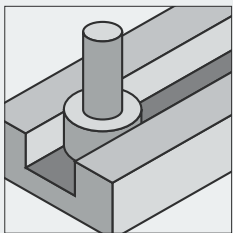
Forare fresare
Drill milling



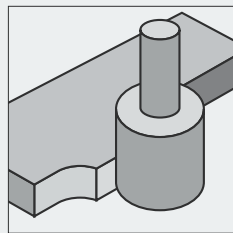
Fresatura esterna
sgrossare rifinire
External milling roughing
and finishing



Fori eccentrici
Eccentric holes



Fresatura interna
Internal milling

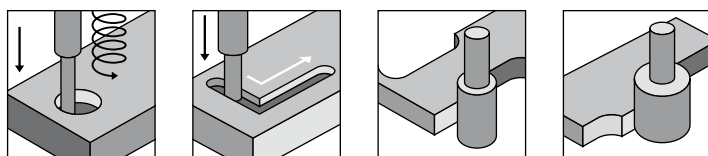


Contornare
Contouring



PUNTE PER PANTOGRAFO PL25

PL25 Router Bits



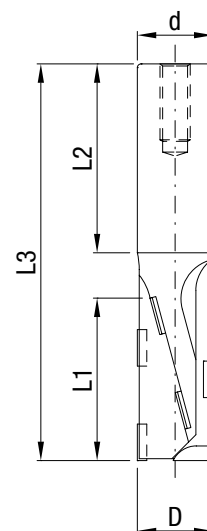
Punte per pantografo ideali per la pantografatura e fresatura di pannelli in Truciolare e MDF grezzi o nobilitati, multistrati, su macchine CNC.
Buona finitura sul pannello e sul rivestimento.
Placchette con angolo assiale positivo/negativo.
Taglio elicoidale e scarico del truciolo raggiato per una migliore evacuazione del truciolo.
Forante in HM.
Capacità di 2/3 riaffilature.

Used for CNC routing and contouring chipboard, MDF, HDF and plywood panels with or without veneer, paper or plastic coatings.
Good finish both on panel and coating.
Positive and negative tips axial angle.
Compression type cut with radius chip pocket for an increased dust flow.
Carbide plunge cut.
Average 2-3 resharpening.



PL25 Forante in HM · Carbide Plunge Cut

| CODE RH | CODE LH | D | L1 | d | L2 | L3 | Z |
|---------|---------|----|----|----|----|-----|-----|
| 2700500 | 2700501 | 8 | 22 | 12 | 40 | 72 | 1+1 |
| 2700502 | 2700503 | 10 | 25 | 12 | 40 | 75 | 1+1 |
| 2700504 | 2700505 | 12 | 25 | 12 | 40 | 75 | 1+1 |
| 2700506 | 2700507 | 12 | 25 | 16 | 50 | 85 | 1+1 |
| 2700508 | 2700509 | 12 | 25 | 20 | 50 | 85 | 1+1 |
| 2700510 | 2700511 | 12 | 25 | 25 | 55 | 90 | 1+1 |
| 2700512 | 2700513 | 12 | 35 | 12 | 40 | 85 | 1+1 |
| 2700514 | 2700515 | 14 | 25 | 16 | 50 | 85 | 1+1 |
| 2700516 | 2700517 | 16 | 25 | 16 | 50 | 85 | 1+1 |
| 2700518 | 2700519 | 16 | 25 | 20 | 50 | 85 | 1+1 |
| 2700520 | 2700521 | 16 | 35 | 16 | 50 | 95 | 1+1 |
| 2700522 | 2700523 | 16 | 35 | 20 | 50 | 95 | 1+1 |
| 2700524 | 2700525 | 16 | 43 | 16 | 50 | 105 | 1+1 |
| 2700526 | 2700527 | 16 | 43 | 20 | 50 | 105 | 1+1 |
| 2700528 | 2700529 | 18 | 25 | 16 | 50 | 85 | 1+1 |
| 2700530 | 2700531 | 18 | 25 | 20 | 50 | 85 | 1+1 |
| 2700532 | 2700533 | 18 | 25 | 25 | 55 | 90 | 1+1 |
| 2700534 | 2700535 | 18 | 35 | 16 | 50 | 95 | 1+1 |
| 2700536 | 2700537 | 18 | 35 | 20 | 50 | 95 | 1+1 |
| 2700538 | 2700539 | 18 | 35 | 25 | 55 | 100 | 1+1 |
| 2700540 | 2700541 | 18 | 43 | 16 | 50 | 105 | 1+1 |
| 2700542 | 2700543 | 18 | 43 | 20 | 50 | 105 | 1+1 |
| 2700544 | 2700545 | 18 | 43 | 25 | 55 | 110 | 1+1 |
| 2700546 | 2700547 | 20 | 25 | 20 | 50 | 85 | 1+1 |
| 2700548 | 2700549 | 20 | 25 | 25 | 55 | 90 | 1+1 |
| 2700550 | 2700551 | 20 | 35 | 20 | 50 | 95 | 1+1 |



PL25 Forante in HM · Carbide Plunge Cut

| CODE RH | CODE LH | D | L1 | d | L2 | L3 | Z |
|---------|---------|----|----|----|----|-----|-----|
| 2700552 | 2700553 | 20 | 35 | 25 | 55 | 100 | 1+1 |
| 2700554 | 2700555 | 20 | 43 | 20 | 50 | 105 | 1+1 |
| 2700556 | 2700557 | 20 | 43 | 25 | 55 | 110 | 1+1 |
| 2700558 | 2700559 | 20 | 52 | 20 | 50 | 112 | 1+1 |
| 2700560 | 2700561 | 20 | 52 | 25 | 55 | 117 | 1+1 |
| 2700562 | 2700563 | 20 | 65 | 20 | 50 | 125 | 1+1 |
| 2700564 | 2700565 | 20 | 65 | 25 | 55 | 130 | 1+1 |
| 2700566 | 2700567 | 25 | 85 | 20 | 50 | 145 | 1+1 |
| 2700568 | 2700569 | 25 | 85 | 25 | 55 | 150 | 1+1 |

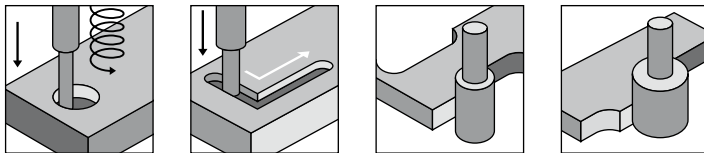
PL25 Forante in HM · Carbide Plunge Cut



| CODE RH | CODE LH | D | L1 | d | L2 | L3 | Z |
|---------|---------|--------------|-------------|--------------|------------|-------------|-----|
| 2700800 | 2700801 | 12,7 (1/2") | 25 (1") | 12,7 (1/2") | 40 (15/8") | 75 (3") | 1+1 |
| 2700802 | 2700803 | 12,7 (1/2") | 35 (13/8") | 12,7 (1/2") | 40 (15/8") | 85 (33/8") | 1+1 |
| 2700804 | 2700805 | 15,88 (5/8") | 25 (1") | 15,88 (5/8") | 50 (2") | 85 (33/8") | 1+1 |
| 2700806 | 2700807 | 15,88 (5/8") | 35 (13/8") | 15,88 (5/8") | 50 (2") | 95 (36/8") | 1+1 |
| 2700808 | 2700809 | 19,05 (3/4") | 25 (1") | 19,05 (3/4") | 50 (2") | 85 (33/8") | 1+1 |
| 2700810 | 2700811 | 19,05 (3/4") | 35 (13/8") | 19,05 (3/4") | 50 (2") | 95 (36/8") | 1+1 |
| 2700814 | 2700815 | 19,05 (3/4") | 43 (15/8") | 19,05 (3/4") | 50 (2") | 108 (42/8") | 1+1 |
| 2700812 | 2700813 | 19,05 (3/4") | 52 (21/16") | 19,05 (3/4") | 50 (2") | 117 (45/8") | 1+1 |

PUNTE PER PANTOGRAFO PL40

PL40 Router Bits



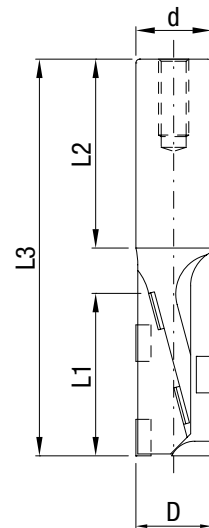
Punte per pantografo ideali per la pantografatura e fresatura di pannelli in Truciolare e MDF grezzi o nobilitati, multistrati, su macchine CNC.
Buona finitura sul pannello e sul rivestimento.
Placchette con angolo assiale positivo/negativo.
Taglio elicoidale e scarico del truciolo raggiato per una migliore evacuazione del truciolo.
Forante in HM.
Capacità di 8/10 riaffilature.

Used for CNC routing and contouring chipboard, MDF, HDF and plywood panels with or without veneer, paper or plastic coatings.
Good finish both on panel and coating.
Positive and negative tips axial angle.
Compression type cut with radius chip pocket for an increased dust flow.
Carbide plunge cut.
Average 8-10 resharpening.



PL40 Forante in HM · Carbide Plunge Cut

| CODE RH | CODE LH | D | L1 | d | L2 | L3 | Z |
|---------|---------|----|----|----|----|-----|-----|
| 2800012 | 2800013 | 16 | 25 | 16 | 50 | 85 | 1+1 |
| 2800016 | 2800017 | 16 | 35 | 16 | 50 | 95 | 1+1 |
| 2800024 | 2800025 | 18 | 25 | 16 | 50 | 85 | 1+1 |
| 2800028 | 2800029 | 18 | 25 | 20 | 50 | 85 | 1+1 |
| 2800032 | 2800033 | 18 | 25 | 25 | 55 | 90 | 1+1 |
| 2800040 | 2800041 | 18 | 35 | 20 | 50 | 95 | 1+1 |
| 2800044 | 2800045 | 18 | 35 | 25 | 55 | 100 | 1+1 |
| 2800052 | 2800053 | 18 | 43 | 20 | 50 | 105 | 1+1 |
| 2800056 | 2800057 | 18 | 43 | 25 | 55 | 110 | 1+1 |
| 2800064 | 2800065 | 20 | 25 | 20 | 50 | 85 | 1+1 |
| 2800068 | 2800069 | 20 | 25 | 25 | 55 | 90 | 1+1 |
| 2800076 | 2800077 | 20 | 35 | 20 | 50 | 95 | 1+1 |
| 2800080 | 2800081 | 20 | 35 | 25 | 55 | 100 | 1+1 |
| 2800088 | 2800089 | 20 | 43 | 20 | 50 | 105 | 1+1 |
| 2800092 | 2800093 | 20 | 43 | 25 | 55 | 110 | 1+1 |
| 2800100 | 2800101 | 20 | 52 | 20 | 50 | 112 | 1+1 |
| 2800104 | 2800105 | 20 | 52 | 25 | 55 | 117 | 1+1 |
| 2800108 | 2800109 | 25 | 65 | 20 | 50 | 125 | 1+1 |
| 2800112 | 2800113 | 25 | 65 | 25 | 55 | 130 | 1+1 |
| 2800116 | 2800117 | 25 | 85 | 20 | 50 | 145 | 1+1 |
| 2800120 | 2800121 | 25 | 85 | 25 | 55 | 150 | 1+1 |

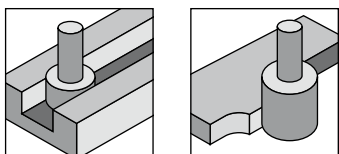


PL40 Forante in PCD · PCD Plunge Cut

| CODE RH | CODE LH | D | L1 | d | L2 | L3 | Z |
|---------|---------|----|----|----|----|-----|-----|
| 2801012 | 2801013 | 16 | 25 | 16 | 50 | 85 | 1+1 |
| 2801016 | 2801017 | 16 | 35 | 16 | 50 | 95 | 1+1 |
| 2801024 | 2801025 | 18 | 25 | 16 | 50 | 85 | 1+1 |
| 2801028 | 2801029 | 18 | 25 | 20 | 50 | 85 | 1+1 |
| 2801032 | 2801033 | 18 | 25 | 25 | 55 | 90 | 1+1 |
| 2801040 | 2801041 | 18 | 35 | 20 | 50 | 95 | 1+1 |
| 2801044 | 2801045 | 18 | 35 | 25 | 55 | 100 | 1+1 |
| 2801052 | 2801053 | 18 | 43 | 20 | 50 | 105 | 1+1 |
| 2801056 | 2801057 | 18 | 43 | 25 | 55 | 110 | 1+1 |
| 2801064 | 2801065 | 20 | 25 | 20 | 50 | 85 | 1+1 |
| 2801068 | 2801069 | 20 | 25 | 25 | 55 | 90 | 1+1 |
| 2801076 | 2801077 | 20 | 35 | 20 | 50 | 95 | 1+1 |
| 2801080 | 2801081 | 20 | 35 | 25 | 55 | 100 | 1+1 |
| 2801088 | 2801089 | 20 | 43 | 20 | 50 | 105 | 1+1 |
| 2801092 | 2801093 | 20 | 43 | 25 | 55 | 110 | 1+1 |
| 2801100 | 2801101 | 20 | 52 | 20 | 50 | 112 | 1+1 |
| 2801104 | 2801105 | 20 | 52 | 25 | 55 | 117 | 1+1 |
| 2801108 | 2801109 | 25 | 65 | 20 | 50 | 125 | 1+1 |
| 2801112 | 2801113 | 25 | 65 | 25 | 55 | 130 | 1+1 |
| 2801116 | 2801117 | 25 | 85 | 20 | 50 | 145 | 1+1 |
| 2801120 | 2801121 | 25 | 85 | 25 | 55 | 150 | 1+1 |

PUNTE PER PANTOGRAFO TRAKTOR

Traktor Router Bits



Punte per pantografo ideali per la scontornatura di pannelli in Truciolare e MDF grezzi o nobilitati, multi-strati, HPL su macchine CNC.

Placchette con angolo assiale elevato per una miglior finitura su tutti i tipi di rivestimento.

Elevata velocità di avanzamento (Z3 fino a 25 m/min – Z4 fino a 35 m/min).

Grazie al Diamante anche in testa è l'ideale per eseguire battute o ribassi.

Gambo rettificato idoneo anche al calettamento termico, Tribos o Sino.

Diamante Lucido.

Capacità di 8/10 riaffilature.

Used for CNC contouring chipboard, MDF, HDF and sandwich panels with or without veneer, paper or plastic coatings and plywood.

High degree tips axial angle for better finishing on any type of coating.

High feeding speed (Z3 up to 25 meters/minute – Z4 up to 35 meters/minute).

Bottom sharpened tips for rabbetting or rebating.

Ground shank suitable for heat shrinking chucks, Sino or Tribos™.

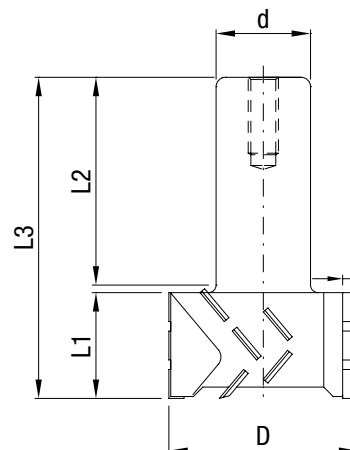
Polished PCD.

Average 8-10 resharpening.



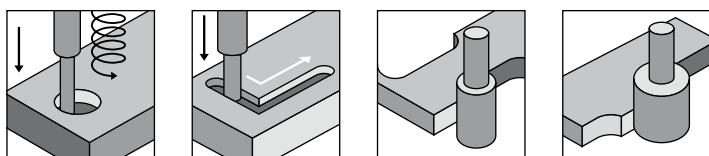
Traktor

| | CODE LH | D | L1 | d | L2 | L3 | Z |
|---------|---------|----|----|----|----|----|-----|
| 2500020 | 2500021 | 50 | 23 | 25 | 55 | 80 | 3+3 |
| 2500022 | 2500023 | 50 | 23 | 25 | 55 | 80 | 4+4 |
| 2500024 | 2500025 | 50 | 28 | 25 | 55 | 85 | 3+3 |
| 2500026 | 2500027 | 50 | 28 | 25 | 55 | 85 | 4+4 |
| 2500028 | 2500029 | 50 | 38 | 25 | 55 | 95 | 3+3 |
| 2500030 | 2500031 | 50 | 38 | 25 | 55 | 95 | 4+4 |
| 2500040 | 2500041 | 60 | 23 | 25 | 55 | 80 | 3+3 |
| 2500042 | 2500043 | 60 | 23 | 25 | 55 | 80 | 4+4 |
| 2500032 | 2500033 | 60 | 28 | 25 | 55 | 85 | 3+3 |
| 2500034 | 2500035 | 60 | 28 | 25 | 55 | 85 | 4+4 |
| 2500036 | 2500037 | 60 | 38 | 25 | 55 | 95 | 3+3 |
| 2500038 | 2500039 | 60 | 38 | 25 | 55 | 95 | 4+4 |



PUNTE PER PANTOGRAFO XP2

XP2 Router Bits



Punte per pantografo ideali per la pantografatura e fresatura di pannelli in Truciolare e MDF grezzi o nobilitati, multistrati, ... su macchine CNC.

Ottima finitura sul pannello e sul rivestimento.

Placchette con angolo assiale positivo/negativo molto elevato per una migliore finitura con una maggiore velocità di avanzamento. Il taglio frazionato e distanziato elicoidale permette per una migliore evacuazione del truciolo con riduzione della rumorosità.

Gambo rettificato idoneo anche al calettamento termico, Tribos o Sino.

Diamante altezza 4 mm.

Forante in PCD.

Capacità di 8/10 riaffilature.

Used for CNC routing and contouring chipboard, MDF, HDF and plywood panels with or without veneer, paper or plastic coatings.

Excellent finish both on panel and coating.

High degree positive and negative tips axial angle for better finishing and higher feeding speed.

Split compression type cut with generous chip pocket granting an higher dust evacuation rate and a lower noise level.

Ground shank suitable for heat shrinking chucks, Sino or Tribos™.

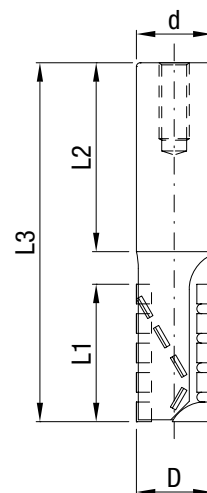
PCD plunge cut.

Average 8-10 resharpening.



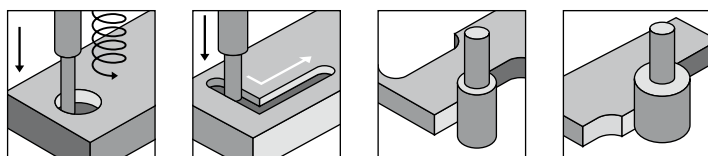
XP2 Forante in PCD · PCD Plunge Cut

| CODE RH | CODE LH | D | L1 | d | L2 | L3 | Z |
|---------|---------|----|----|----|----|-----|-----|
| 3800012 | 3800013 | 20 | 24 | 20 | 50 | 85 | 2+2 |
| 3800020 | 3800021 | 20 | 24 | 25 | 55 | 90 | 2+2 |
| 3800028 | 3800029 | 20 | 28 | 20 | 50 | 85 | 2+2 |
| 3800036 | 3800037 | 20 | 28 | 25 | 55 | 90 | 2+2 |
| 3800044 | 3800045 | 20 | 36 | 20 | 50 | 95 | 2+2 |
| 3800052 | 3800053 | 20 | 36 | 25 | 55 | 100 | 2+2 |
| 3800060 | 3800061 | 20 | 48 | 20 | 50 | 105 | 2+2 |
| 3800068 | 3800069 | 20 | 48 | 25 | 55 | 110 | 2+2 |
| 3800076 | 3800077 | 25 | 24 | 25 | 55 | 90 | 2+2 |
| 3800084 | 3800085 | 25 | 28 | 20 | 50 | 85 | 2+2 |
| 3800092 | 3800093 | 25 | 28 | 25 | 55 | 90 | 2+2 |
| 3800100 | 3800101 | 25 | 36 | 20 | 50 | 95 | 2+2 |
| 3800108 | 3800109 | 25 | 36 | 25 | 55 | 100 | 2+2 |
| 3800116 | 3800117 | 25 | 48 | 20 | 50 | 105 | 2+2 |
| 3800124 | 3800125 | 25 | 48 | 25 | 55 | 110 | 2+2 |
| 3800132 | 3800133 | 25 | 55 | 20 | 50 | 115 | 2+2 |
| 3800140 | 3800141 | 25 | 55 | 25 | 55 | 120 | 2+2 |
| 3800148 | 3800149 | 25 | 68 | 20 | 50 | 128 | 2+2 |
| 3800156 | 3800157 | 25 | 68 | 25 | 55 | 133 | 2+2 |
| 3800164 | 3800165 | 25 | 86 | 20 | 50 | 145 | 2+2 |
| 3800172 | 3800173 | 25 | 86 | 25 | 55 | 150 | 2+2 |



PUNTE PER PANTOGRAFO HP2

HP Router Bits



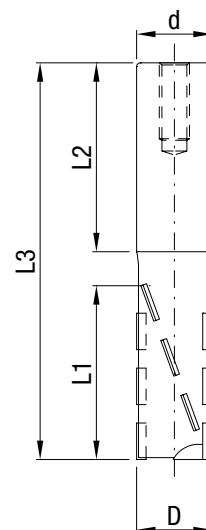
Punte per pantografo ideali per la pantografatura e fresatura di pannelli in Truciolare e MDF grezzi o nobilitati, multistrati, su macchine CNC.
 Ottima finitura sul pannello e sul rivestimento.
 Placchette con angolo assiale positivo/negativo.
 Scarico del truciolo raggiato per una migliore evacuazione del truciolo ed una ridotta rumorosità.
 Gambo rettificato idoneo anche al calettamento termico, Tribos o Sino.
 Possibilità di scelta tra forante in HM o in PCD.
 Capacità di 2/3 riaffilature per serie HP2.
 Capacità di 8/10 riaffilature per serie HP4.

Used for CNC routing and contouring chipboard, MDF, HDF and plywood panels with or without veneer, paper or plastic coatings.
 Excellent finish both on panel and coating.
 Positive and negative tips axial angle.
 Compression type cut with radius chip pocket.
 Ground shank suitable for heat shrinking chucks, Sino or Tribos™
 Available Carbide or PCD Plunge cut
 Average 2-3 resharpening (HP2 series)
 Average 8-10 resharpening (HP4 series)



“HP2” con forante in HM · Carbide Plunge Cut

| CODE RH | CODE LH | D | L1 | d | L2 | L3 | Z |
|---------|---------|----|----|----|----|-----|-----|
| 3500104 | 3500105 | 16 | 23 | 20 | 50 | 85 | 2+2 |
| 3500112 | 3500113 | 18 | 27 | 20 | 50 | 85 | 2+2 |
| 3500120 | 3500121 | 18 | 27 | 25 | 55 | 90 | 2+2 |
| 3500128 | 3500129 | 18 | 36 | 20 | 50 | 95 | 2+2 |
| 3500136 | 3500137 | 18 | 36 | 25 | 55 | 100 | 2+2 |
| 3500144 | 3500145 | 20 | 27 | 20 | 50 | 85 | 2+2 |
| 3500152 | 3500153 | 20 | 27 | 25 | 55 | 90 | 2+2 |
| 3500160 | 3500161 | 20 | 36 | 20 | 50 | 95 | 2+2 |
| 3500168 | 3500169 | 20 | 36 | 25 | 55 | 100 | 2+2 |
| 3500176 | 3500177 | 20 | 46 | 20 | 50 | 105 | 2+2 |
| 3500184 | 3500185 | 20 | 46 | 25 | 55 | 110 | 2+2 |
| 3500216 | 3500217 | 20 | 57 | 20 | 50 | 117 | 2+2 |
| 3500224 | 3500225 | 20 | 57 | 25 | 55 | 122 | 2+2 |
| 3500192 | 3500193 | 25 | 67 | 20 | 50 | 126 | 2+2 |
| 3500200 | 3500201 | 25 | 67 | 25 | 55 | 133 | 2+2 |
| 3500208 | 3500209 | 25 | 86 | 25 | 55 | 150 | 2+2 |



“HP2” con forante in PCD · PCD Plunge Cut

| CODE RH | CODE LH | D | L1 | d | L2 | L3 | Z |
|---------|---------|----|----|----|----|-----|-----|
| 3501104 | 3501105 | 16 | 23 | 20 | 50 | 85 | 2+2 |
| 3501112 | 3501113 | 18 | 27 | 20 | 50 | 85 | 2+2 |
| 3501120 | 3501121 | 18 | 27 | 25 | 55 | 90 | 2+2 |
| 3501128 | 3501129 | 18 | 36 | 20 | 50 | 95 | 2+2 |
| 3501136 | 3501137 | 18 | 36 | 25 | 55 | 100 | 2+2 |

PUNTE PER PANTOGRAFO HP2

HP Router Bits

“HP2” con forante in PCD · PCD Plunge Cut

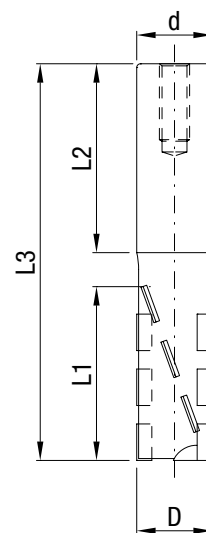
| CODE RH | CODE LH | D | L1 | d | L2 | L3 | Z |
|---------|---------|----|----|----|----|-----|-----|
| 3501144 | 3501145 | 20 | 27 | 20 | 50 | 85 | 2+2 |
| 3501152 | 3501153 | 20 | 27 | 25 | 55 | 90 | 2+2 |
| 3501160 | 3501161 | 20 | 36 | 20 | 50 | 95 | 2+2 |
| 3501168 | 3501169 | 20 | 36 | 25 | 55 | 100 | 2+2 |
| 3501176 | 3501177 | 20 | 46 | 20 | 50 | 105 | 2+2 |
| 3501184 | 3501185 | 20 | 46 | 25 | 55 | 110 | 2+2 |
| 3501216 | 3501217 | 20 | 57 | 20 | 50 | 117 | 2+2 |
| 3501224 | 3501225 | 20 | 57 | 25 | 55 | 122 | 2+2 |
| 3501192 | 3501193 | 25 | 67 | 20 | 50 | 126 | 2+2 |
| 3501200 | 3501201 | 25 | 67 | 25 | 55 | 133 | 2+2 |
| 3501208 | 3501209 | 25 | 86 | 25 | 55 | 150 | 2+2 |

“HP4” con forante in HM · Carbide Plunge Cut

| CODE RH | CODE LH | D | L1 | d | L2 | L3 | Z |
|---------|---------|----|----|----|----|-----|-----|
| 3500500 | 3500501 | 20 | 27 | 20 | 50 | 85 | 2+2 |
| 3500508 | 3500509 | 20 | 27 | 25 | 55 | 90 | 2+2 |
| 3500516 | 3500517 | 20 | 36 | 20 | 50 | 95 | 2+2 |
| 3500524 | 3500525 | 20 | 36 | 25 | 55 | 100 | 2+2 |
| 3500532 | 3500533 | 25 | 46 | 20 | 50 | 105 | 2+2 |
| 3500540 | 3500541 | 25 | 46 | 25 | 55 | 110 | 2+2 |
| 3500548 | 3500549 | 25 | 67 | 25 | 55 | 133 | 2+2 |
| 3500556 | 3500557 | 25 | 86 | 25 | 55 | 150 | 2+2 |

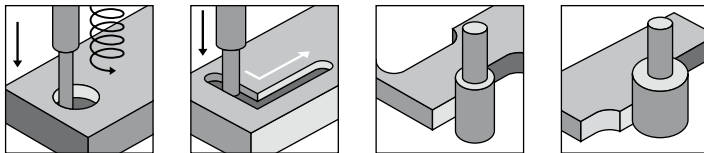
“HP4” con forante in PCD · PCD Plunge Cut

| CODE RH | CODE LH | D | L1 | d | L2 | L3 | Z |
|---------|---------|----|----|----|----|-----|-----|
| 3501500 | 3501501 | 20 | 27 | 20 | 50 | 85 | 2+2 |
| 3501508 | 3501509 | 20 | 27 | 25 | 55 | 90 | 2+2 |
| 3501516 | 3501517 | 20 | 36 | 20 | 50 | 95 | 2+2 |
| 3501524 | 3501525 | 20 | 36 | 25 | 55 | 100 | 2+2 |
| 3501532 | 3501533 | 25 | 46 | 20 | 50 | 105 | 2+2 |
| 3501540 | 3501541 | 25 | 46 | 25 | 55 | 110 | 2+2 |
| 3501548 | 3501549 | 25 | 67 | 25 | 55 | 133 | 2+2 |
| 3501556 | 3501557 | 25 | 86 | 25 | 55 | 150 | 2+2 |



PUNTE PER PANTOGRAFO TOP 2

TOP 2 Router Bits



Punte per pantografo ideali per la pantografatura e fresatura di pannelli in Truciolare e MDF grezzi o nobilitati, multistrati, su macchine CNC.

Ottima finitura sul pannello e sul rivestimento.

Placchette con angolo assiale positivo/negativo con prevalenza della parte negativa.

Il taglio frazionato e lo scarico del truciolo raggiato permettono una buona evacuazione del truciolo e un'elevata velocità di avanzamento.

Gambo rettificato idoneo anche al calettamento termico, Tribos o Sino.

Forante in PCD.

Capacità di 8/10 riaffilature.

Used for CNC routing and contouring chipboard, MDF, HDF and plywood panels with or without veneer, paper or plastic coatings.

Excellent finish both on panel and coating.

Positive and negative tips axial angle, with prevalence of negative ones.

Split compression type cut with generous chip pocket granting a higher dust evacuation rate and a greater feeding speed.

Ground shank suitable for heat shrinking chucks, Sino or Tribos™.

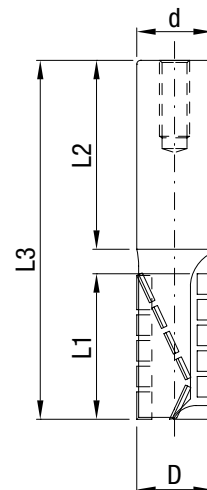
PCD plunge cut.

Average 8-10 resharpening.



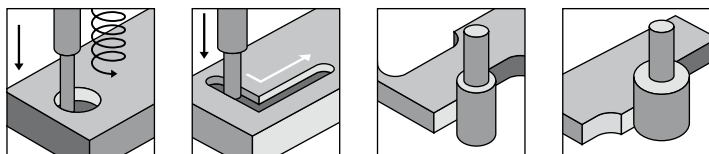
Top 2 con forante in PCD · PCD Plunge Cut

| CODE RH | CODE LH | | L1 | d | L2 | L3 | Z |
|---------|---------|----|----|----|----|-----|---|
| 2900200 | 2900201 | 18 | 22 | 20 | 50 | 85 | 3 |
| 2900202 | 2900203 | 20 | 28 | 20 | 50 | 85 | 3 |
| 2900204 | 2900205 | 20 | 38 | 20 | 50 | 95 | 3 |
| 2900206 | 2900207 | 20 | 45 | 20 | 50 | 105 | 3 |
| 2900208 | 2900209 | 20 | 28 | 25 | 55 | 90 | 3 |
| 2900210 | 2900211 | 20 | 38 | 25 | 55 | 100 | 3 |
| 2900212 | 2900213 | 25 | 28 | 25 | 55 | 90 | 3 |
| 2900214 | 2900215 | 25 | 38 | 25 | 55 | 105 | 3 |
| 2900216 | 2900217 | 25 | 45 | 25 | 55 | 110 | 3 |
| 2900218 | 2900219 | 25 | 55 | 25 | 55 | 123 | 3 |
| 2900220 | 2900221 | 25 | 64 | 25 | 55 | 130 | 3 |
| 2900222 | 2900223 | 25 | 85 | 25 | 55 | 150 | 3 |



PUNTE PER PANTOGRAFO EVO

EVO Router Bits



Punte per pantografo ideali per la scontornatura e la fresatura di pannelli in truciolare e MDF nobilitati e grezzi, su macchine Cnc.

Taglio di qualità straordinariamente elevata, sia su pannello grezzo che rivestito, ideale per avanzamenti elevati sia sul dritto che sui repentini cambi di direzione.

Performance elevatissime, grazie alle placchette dall'accentuato angolo assiale positivo/negativo, con la maggior parte dei taglienti disposti in positivo, con la spirale completamente traente, studiata per l'evacuazione del truciolo verso l'alto.

Forante in PCD.

Router bits ideal for milling and contouring chipboards, Mdf, with or without veneer, used on CNC machines.

Extremely high cutting quality on raw panel and coating, ideal for high feeding speed, both for straight and split cuts.

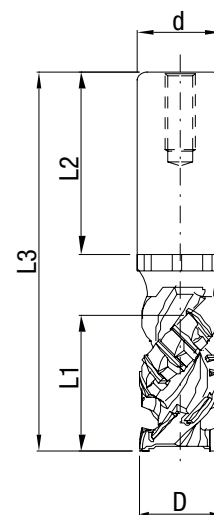
Very high performance thanks to positive and negative tips axial angle, mostly positive and to the top whirl dust evacuation.

PCD Plunge cut.



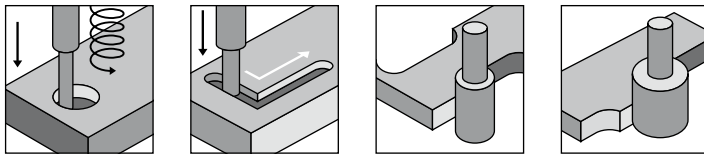
EVO con forante in PCD · PCD Plunge Cut

| CODE RH | CODE LH | D | L1 | d | L2 | L3 | Z |
|---------|---------|----|----|----|----|-----|---|
| 3400012 | | 20 | 28 | 20 | 50 | 93 | 2 |
| 3400020 | | 25 | 28 | 25 | 55 | 98 | 2 |
| 3400028 | | 20 | 45 | 20 | 50 | 110 | 2 |
| 3400034 | | 25 | 45 | 25 | 55 | 115 | 2 |
| 3400042 | | 25 | 55 | 25 | 55 | 127 | 2 |
| 3400050 | | 25 | 67 | 25 | 55 | 137 | 2 |



PUNTE PER PANTOGRAFO NESTING

Nesting Router Bits



Punte per pantografo studiate per la lavorazione specifica del NESTING, Ideali per pantografatura e fresatura di pannelli in truciolare, MDF e multistrato sia grezzi che rivestiti, da utilizzare su macchine CNC. Ottima finitura sul pannello e sul rivestimento, Placchette con angolo assiale positivo/negativo con prevalenza della parte positiva.

Il taglio frazionato permette una buona evacuazione del truciolo.

Gambo rettificato idoneo anche al calettamento termico, Tribos, o Sino

Forante in PCD

Capacità di 4/6 affilature

Router studied for Nesting, ideal for milling and contouring chipboards, Mdf, with or without veneer, used on CNC machines.

Excellent finishing both on panel and coating.

Tips with positive/negative axial angle, mostly positive.

Split cuts allowing a good dust evacuation.

Ground shank suitable for heat shrinking chucks, Sino or Tribos.

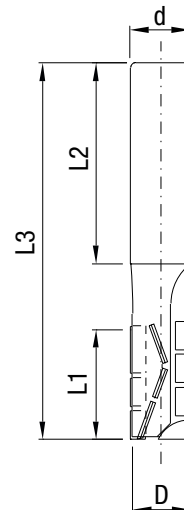
PCD Plunge cut.

4/6 re-sharpening available.



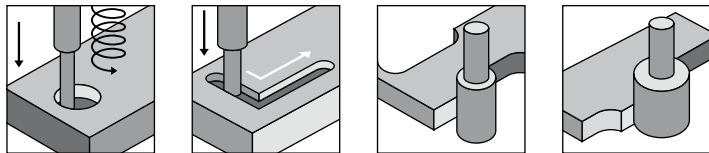
Nesting con forante in PCD - PCD plunge cut

| CODE RH | D | L1 | d | L2 | L3 | Z |
|---------|----|----|----|----|----|---|
| 3602202 | 10 | 22 | 12 | 40 | 75 | 2 |
| 3602204 | 12 | 22 | 12 | 40 | 75 | 3 |
| 3602206 | 12 | 27 | 12 | 40 | 75 | 3 |
| 3602208 | 12 | 33 | 12 | 40 | 85 | 3 |
| 3602210 | 14 | 22 | 16 | 50 | 85 | 3 |
| 3602212 | 14 | 27 | 16 | 50 | 85 | 3 |
| 3602214 | 14 | 33 | 16 | 50 | 95 | 3 |



PUNTE PER PANTOGRAFO TOP HD

TOP HD Router Bits



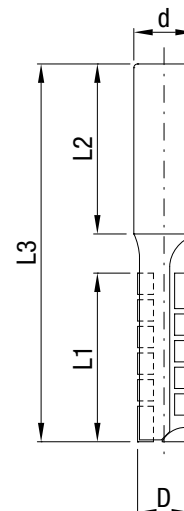
Punte per pantografo ideali per la pantografatura e fresatura di pannelli ad elevato spessore in Truciolare e MDF grezzi o nobilitati, multistrati, su macchine CNC. Grazie al corpo in materiale antivibrante permette di avere velocità di avanzamento superiori con una contemporanea riduzione della rumorosità. Il taglio frazionato permette una buona evacuazione del truciolo. Ottima finitura sul pannello e sul rivestimento. Placchette con angolo assiale positivo/negativo con prevalenza della parte negativa. Gambo rettificato idoneo anche al calettamento termico, Tribos o Sino. Forante in PCD. Capacità di 8/10 riaffilature.

Used for CNC routing and contouring chipboard, MDF, HDF and plywood high wallthickness panels with or without veneer, paper or plastic coatings. Thanks to the vibration resistant body, higher feeding speeds and lower noise can be achieved. Split type cut with generous chip pocket granting a higher dust evacuation. Excellent finish both on panel and coating. Positive and negative tips axial angle, with prevalence of negative ones. Ground shank suitable for heat shrinking chucks, Sino or Tribos™. PCD plunge cut. Average 8-10 resharpening.



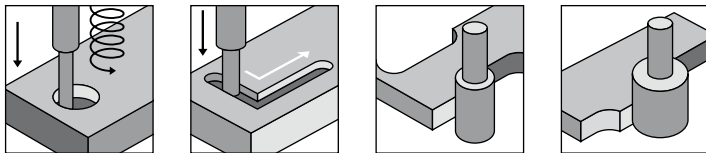
Top HD con forante in PCD · PCD Plunge Cut

| CODE RH | CODE LH | D | L1 | d | L3 | Z | H |
|---------|---------|----|-----|----|----|-----|---|
| 2902202 | 2902203 | 10 | 23 | 12 | 40 | 75 | 3 |
| 2902204 | 2902205 | 12 | 27 | 12 | 40 | 75 | 3 |
| 2902206 | 2902207 | 12 | 38 | 12 | 40 | 90 | 3 |
| 2902218 | 2902219 | 12 | 22 | 12 | 40 | 75 | 3 |
| 2902220 | 2902221 | 12 | 27 | 12 | 40 | 75 | 3 |
| 2902208 | 2902209 | 14 | 45 | 16 | 50 | 100 | 2 |
| 2902210 | 2902211 | 16 | 55 | 16 | 50 | 100 | 3 |
| 2902212 | 2902213 | 20 | 67 | 20 | 50 | 125 | 3 |
| 2902214 | 2902215 | 22 | 75 | 20 | 50 | 125 | 3 |
| 2902216 | 2902217 | 25 | 105 | 25 | 55 | 170 | 3 |



PUNTE PER PANTOGRAFO TOP R

TOP R Router Bits



Punte per pantografo ideali per la pantografatura e fresatura di pannelli in Truciolare e MDF grezzi o nobilitati, multistrati, su macchine CNC.

Ottima finitura sul pannello e sul rivestimento.

Placchette con angolo assiale positivo/negativo con prevalenza della parte positiva.

Il taglio frazionato e lo scarico del truciolo raggiato permettono un'ottima evacuazione del truciolo diretta verso l'aspirazione e un'elevata velocità di avanzamento.

Gambo rettificato idoneo anche al calettamento termico, Tribos o Sino.

Forante in PCD.

Capacità di 8/10 riaffilature.

Used for CNC routing and contouring chipboard, MDF, HDF and plywood panels with or without veneer, paper or plastic coatings.

Excellent finish both on panel and coating.

Positive and negative tips axial angle, with prevalence of positive ones.

Split compression type cut with generous chip pocket granting a higher dust evacuation rate pointing directly to vacuum system and a greater feeding speed.

Ground shank suitable for heat shrinking chucks, Sino or Tribos™.

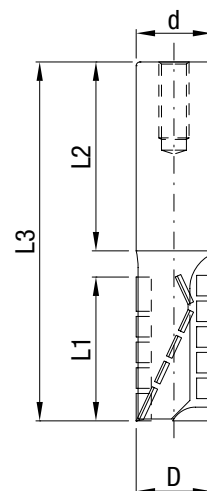
PCD plunge cut.

Average 8-10 resharpening.



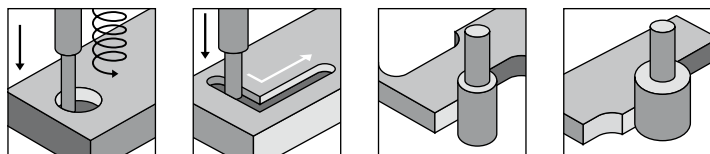
Top R con forante in PCD · PCD Plunge Cut

| CODE RH | CODE LH | D | L1 | d | L2 | L3 | Z |
|---------|---------|----|----|----|----|-----|---|
| 3600020 | 3600021 | 18 | 22 | 20 | 50 | 85 | 3 |
| 3600022 | 3600023 | 20 | 28 | 20 | 50 | 85 | 3 |
| 3600024 | 3600025 | 20 | 38 | 20 | 50 | 95 | 3 |
| 3600026 | 3600027 | 20 | 45 | 20 | 50 | 105 | 3 |
| 3600028 | 3600029 | 20 | 28 | 25 | 55 | 90 | 3 |
| 3600030 | 3600031 | 20 | 38 | 25 | 55 | 100 | 3 |
| 3600032 | 3600033 | 25 | 28 | 25 | 55 | 90 | 3 |
| 3600034 | 3600035 | 25 | 38 | 25 | 55 | 105 | 3 |
| 3600036 | 3600037 | 25 | 45 | 25 | 55 | 110 | 3 |
| 3600038 | 3600039 | 25 | 55 | 25 | 55 | 123 | 3 |
| 3600040 | 3600041 | 25 | 62 | 25 | 55 | 130 | 3 |
| 3600042 | 3600043 | 25 | 85 | 25 | 55 | 150 | 3 |



PUNTE PER PANTOGRAFO DR

DR Router Bits



Punte per pantografo a doppio senso di rotazione ideali per la pantografatura e fresatura di pannelli in Truciolare e MDF grezzi o nobilitati, multistrati, su macchine CNC.

Permette di eseguire la squadratura senza la necessità di effettuare il cambio dell'utensile per salvare lo spigolo dei pannelli. L'esecuzione elicoidale nella parte superiore permette un'elevata velocità di avanzamento. La parte inferiore può essere scelta fra Z1+1(Basic) o Z3 (Plus) a seconda delle velocità e metrature desiderate nella sezione a rotazione Sinistra.

Ottima finitura sul pannello e sul rivestimento.

DR Basic con forante in HM.

DR Plus con forante in PCD.

Gambo rettificato idoneo anche al calettamento termico, Tribos o Sino.

Capacità di 8/10 riaffilature.

Right and left hand rotation router bits, suitable for CNC routing and contouring chipboard, MDF, HDF and plywood panels with or without veneer, paper or plastic coatings.

No change over is required when squaring panel, preserving corner integrity.

Helicoidal design of top section delivers high feeding speed.

Bottom section can be either Z1+1 (Basic) or Z3 (Plus) depending on speeds and overall production rate required.

Excellent finish both on panel and coating.

Carbide plunge cut (DR Plus).

PCD plunge cut (DR Plus).

Ground shank suitable for heat shrinking chucks, Sino or Tribos™.

Average 8-10 resharpening.

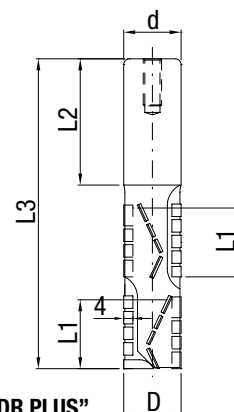
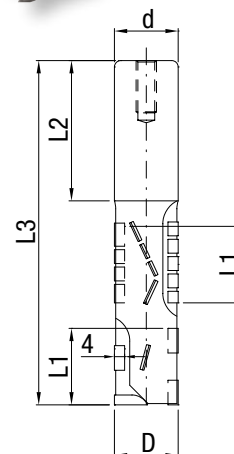


“DR BASIC” con forante in HM · Carbide Plunge Cut

| CODE | D | L1 | d | L2 | L3 | Z |
|---------|----|----|----|----|-----|---|
| 1900020 | 25 | 22 | 25 | 55 | 120 | 3 |
| 1900022 | 25 | 26 | 25 | 55 | 125 | 3 |
| 1900024 | 25 | 30 | 25 | 55 | 135 | 3 |
| 1900026 | 25 | 34 | 25 | 55 | 145 | 3 |

“DR PLUS” con forante in PCD · PCD Plunge Cut

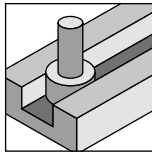
| | D | | d | | L3 | |
|---------|----|----|----|----|-----|---|
| 1901020 | 25 | 22 | 25 | 55 | 120 | 3 |
| 1901022 | 25 | 26 | 25 | 55 | 125 | 3 |
| 1901024 | 25 | 30 | 25 | 55 | 135 | 3 |
| 1901026 | 25 | 34 | 25 | 55 | 145 | 3 |



Type “DR PLUS”

PUNTE PER PANTOGRAFO "SMART"

"SMART" straight Router Bits



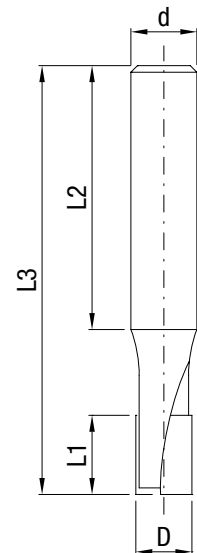
Punte per pantografo ideali nella fresatura e scana-latura di pannelli in Truciolare e MDF grezzi o nobilitati, multistrati, HPL integrale, materie plastiche a spessore, su macchine CNC.
Ottima finitura sul pannello e sul rivestimento.
Placchette Lucide con angolo assiale negativo o neutro.
Corpo in HM integrale fino a D12.
Forante in PCD.
Capacità di 3/4 riaffilature.

Used for CNC routing and contouring chipboard, MDF, HDF, HPL, plywood and sandwich panels with or without veneer, paper or plastic coatings. Excellent finish both on panel and coating. Polished PCD tips with negative or null axial angle. Full Carbide body up to ø12
PCD plunge cut.
Average 3-4 resharpening.



Smart con forante in PCD · PCD plunge cut

| CODE RH | CODE LH | D | L1 | d | L2 | L3 | Z | AXIAL |
|---------|---------|-----|----|----|----|----|---|-------|
| 3300100 | 3300101 | 5 | 8 | 10 | 40 | 55 | 1 | Neg. |
| 3300108 | 3300109 | 5 | 8 | 12 | 40 | 55 | 1 | Neg. |
| 3300116 | 3300117 | 5,5 | 8 | 10 | 40 | 55 | 1 | Neg. |
| 3300124 | 3300125 | 5,5 | 8 | 12 | 40 | 55 | 1 | Neg. |
| 3300132 | 3300133 | 6 | 12 | 10 | 40 | 70 | 1 | Neg. |
| 3300140 | 3300141 | 6 | 12 | 12 | 40 | 70 | 1 | Neg. |
| 3300148 | 3300149 | 6,2 | 12 | 10 | 40 | 70 | 1 | Neg. |
| 3300156 | 3300157 | 6,2 | 12 | 12 | 40 | 70 | 1 | Neg. |
| 3300164 | 3300165 | 6,5 | 12 | 10 | 40 | 70 | 1 | Neg. |
| 3300172 | 3300173 | 6,5 | 12 | 12 | 40 | 70 | 1 | Neg. |
| 3300180 | 3300181 | 6,8 | 12 | 10 | 40 | 70 | 1 | Neg. |
| 3300188 | 3300189 | 6,8 | 12 | 12 | 40 | 70 | 1 | Neg. |
| 3300196 | 3300197 | 7 | 12 | 10 | 40 | 70 | 1 | Neg. |
| 3300204 | 3300205 | 7 | 12 | 12 | 40 | 70 | 1 | Neg. |
| 3300212 | 3300213 | 7,2 | 12 | 10 | 40 | 70 | 1 | Neg. |
| 3300220 | 3300221 | 7,2 | 12 | 12 | 40 | 70 | 1 | Neg. |
| 3300228 | 3300229 | 7,5 | 12 | 10 | 40 | 70 | 1 | Neg. |
| 3300236 | 3300237 | 7,5 | 12 | 12 | 40 | 70 | 1 | Neg. |
| 3300244 | 3300245 | 7,8 | 12 | 10 | 40 | 70 | 1 | Neg. |
| 3300252 | 3300253 | 7,8 | 12 | 12 | 40 | 70 | 1 | Neg. |
| 3300260 | 3300261 | 8 | 15 | 10 | 40 | 70 | 2 | Neg. |
| 3300268 | 3300269 | 8 | 15 | 12 | 40 | 70 | 2 | Neg. |
| 3300276 | 3300277 | 8,5 | 15 | 10 | 40 | 70 | 2 | Neg. |
| 3300284 | 3300285 | 8,5 | 15 | 12 | 40 | 70 | 2 | Neg. |
| 3300292 | 3300293 | 9 | 15 | 10 | 40 | 70 | 2 | Neg. |
| 3300300 | 3300301 | 9 | 15 | 12 | 40 | 70 | 2 | Neg. |

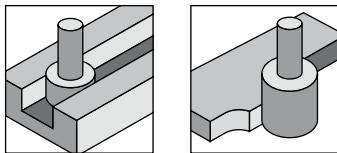


Smart con forante in PCD · PCD plunge cut

| CODE RH | CODE LH | D | L1 | d | L2 | L3 | Z | AXIAL |
|---------|---------|------|----|----|----|----|---|-------|
| 3300308 | 3300309 | 9,5 | 15 | 10 | 40 | 70 | 2 | Neg. |
| 3300316 | 3300317 | 9,5 | 15 | 12 | 40 | 70 | 2 | Neg. |
| 3300324 | 3300325 | 10 | 15 | 10 | 40 | 70 | 2 | Neg. |
| 3300332 | 3300333 | 10 | 15 | 12 | 40 | 70 | 2 | Neg. |
| 3300340 | 3300341 | 10 | 22 | 10 | 40 | 70 | 2 | 0 |
| 3300348 | 3300349 | 10 | 22 | 12 | 40 | 70 | 2 | 0 |
| 3300356 | 3300357 | 10,5 | 15 | 10 | 40 | 70 | 2 | Neg. |
| 3300364 | 3300365 | 10,5 | 15 | 12 | 40 | 70 | 2 | Neg. |
| 3300372 | 3300373 | 12 | 25 | 12 | 40 | 70 | 2 | 0 |
| 3300380 | 3300381 | 16 | 25 | 16 | 50 | 85 | 2 | 0 |
| 3300388 | 3300389 | 16 | 25 | 20 | 50 | 85 | 2 | 0 |
| 3300396 | 3300397 | 16 | 35 | 16 | 50 | 95 | 2 | 0 |
| 3300404 | 3300405 | 16 | 35 | 20 | 50 | 95 | 2 | 0 |
| 3300412 | 3300413 | 20 | 25 | 20 | 50 | 95 | 2 | 0 |
| 3300420 | 3300421 | 20 | 35 | 20 | 50 | 95 | 2 | 0 |
| 3300428 | 3300429 | 20 | 25 | 25 | 50 | 95 | 2 | 0 |
| 3300436 | 3300437 | 20 | 35 | 25 | 50 | 95 | 2 | 0 |

PUNTE PER PANTOGRAFO SAGOMATE

Profile Router Bits



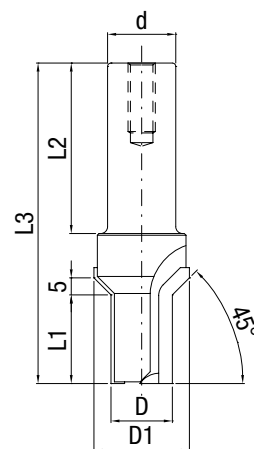
Punte per pantografo ideali per la profilatura di pannelli in Truciolare e MDF grezzi o nobilitati, multistrati, HPL e le principali materie plastiche su macchine CNC.
 Diamante Lucido.
 Gambo rettificato idoneo anche al calettamento termico, Tribos o Sino.
 Ottima finitura sul pannello e sul rivestimento.
 Capacità di 8/10 riaffilature.

Used for CNC routing and profiling chipboard, MDF, HDF, HPL and plywood panels with or without veneer, paper or plastic coatings.
 Polished PCD.
 Ground shank suitable for heat shrinking chucks, Sino or Tribos™.
 Very good finish both on panel and coating.
 Average 8-10 resharpening.



Type A con forante in PCD · PCD plunge cut

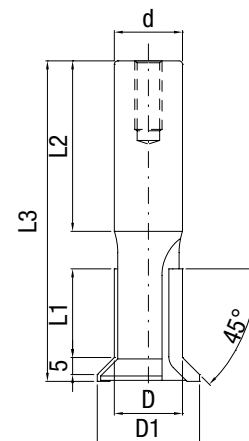
| CODE RH | CODE LH | D | D1 | L1 | d | L2 | L3 | Z |
|---------|---------|----|----|----|----|----|----|-----|
| 2602020 | 2602021 | 18 | 28 | 19 | 20 | 50 | 87 | 2+1 |
| 2602022 | 2602023 | 18 | 28 | 26 | 20 | 50 | 94 | 2+1 |
| 2602024 | 2602025 | 18 | 28 | 19 | 25 | 55 | 91 | 2+1 |
| 2602026 | 2602027 | 18 | 28 | 26 | 25 | 55 | 99 | 2+1 |



Type "A"

Type B

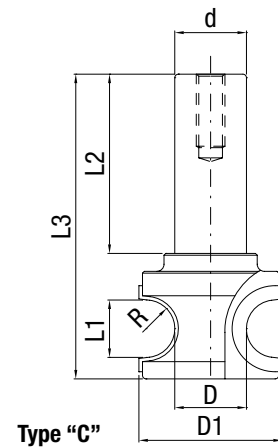
| CODE RH | CODE LH | D | D1 | L1 | d | L2 | L3 | Z |
|---------|---------|----|----|----|----|----|----|---|
| 2603020 | 2603021 | 20 | 30 | 19 | 20 | 50 | 87 | 2 |
| 2603022 | 2603023 | 20 | 30 | 26 | 20 | 50 | 94 | 2 |
| 2603024 | 2603025 | 20 | 30 | 19 | 25 | 55 | 92 | 2 |
| 2603026 | 2603027 | 20 | 30 | 26 | 25 | 55 | 99 | 2 |



Type "B"

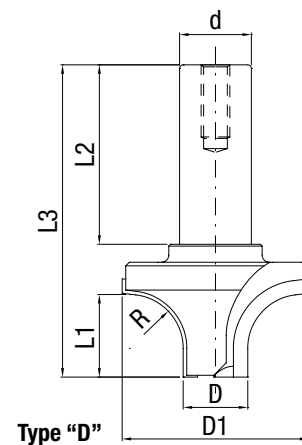
Type C

| | CODE LH | D | D1 | L1 | d | L2 | L3 | Z | R |
|---------|---------|----|----|----|----|----|----|---|----|
| 2600020 | 2600021 | 20 | 40 | 16 | 20 | 50 | 85 | 2 | 8 |
| 2600022 | 2600023 | 20 | 42 | 18 | 20 | 50 | 87 | 2 | 9 |
| 2600024 | 2600025 | 20 | 44 | 20 | 20 | 50 | 89 | 2 | 10 |
| 2600026 | 2600027 | 20 | 48 | 24 | 20 | 50 | 93 | 2 | 12 |
| 2600032 | 2600033 | 20 | 40 | 16 | 25 | 55 | 90 | 2 | 8 |
| 2600034 | 2600035 | 20 | 42 | 18 | 25 | 55 | 92 | 2 | 9 |
| 2600036 | 2600037 | 20 | 44 | 20 | 25 | 55 | 94 | 2 | 10 |
| 2600038 | 2600039 | 20 | 48 | 24 | 25 | 55 | 98 | 2 | 12 |



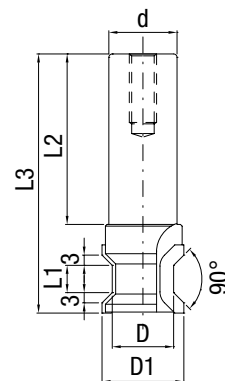
Type D con forante in PCD · PCD plunge cut

| CODE RH | | D | D1 | L1 | d | | Z | R | |
|---------|---------|----|----|----|----|----|----|-----|----|
| 2601020 | 2601021 | 18 | 28 | 23 | 20 | 50 | 87 | 2+1 | 2 |
| 2601022 | 2601023 | 18 | 30 | 23 | 20 | 50 | 87 | 2+1 | 3 |
| 2601024 | 2601025 | 18 | 32 | 23 | 20 | 50 | 87 | 2+1 | 4 |
| 2601026 | 2601027 | 18 | 34 | 23 | 20 | 50 | 87 | 2+1 | 5 |
| 2601028 | 2601029 | 18 | 38 | 23 | 20 | 50 | 87 | 2+1 | 8 |
| 2601034 | 2601035 | 18 | 52 | 23 | 20 | 50 | 87 | 2+1 | 15 |
| 2601036 | 2601037 | 18 | 28 | 23 | 25 | 55 | 92 | 2+1 | 2 |
| 2601038 | 2601039 | 18 | 30 | 23 | 25 | 55 | 92 | 2+1 | 3 |
| 2601040 | 2601041 | 18 | 32 | 23 | 25 | 55 | 92 | 2+1 | 4 |
| 2601042 | 2601043 | 18 | 34 | 23 | 25 | 55 | 92 | 2+1 | 5 |
| 2601044 | 2601045 | 18 | 38 | 23 | 25 | 55 | 92 | 2+1 | 8 |



Type E

| CODE RH | CODE LH | D | D1 | L1 | d | L2 | L3 | Z |
|---------|---------|----|----|----|----|----|----|---|
| 2604020 | 2604021 | 18 | 24 | 8 | 20 | 50 | 76 | 2 |
| 2604022 | 2604023 | 18 | 24 | 10 | 20 | 50 | 78 | 2 |
| 2604024 | 2604025 | 18 | 24 | 15 | 20 | 50 | 85 | 2 |
| 2604026 | 2604027 | 18 | 24 | 19 | 20 | 50 | 89 | 2 |



Type F

| CODE RH | | D | D1 | L1 | d | L2 | L3 | Z | R |
|---------|---------|----|----|----|----|----|----|---|---|
| 2605020 | 2605021 | 20 | 28 | 16 | 20 | 50 | 80 | 2 | 2 |
| 2605022 | 2605023 | 20 | 30 | 16 | 20 | 50 | 80 | 2 | 3 |
| 2605024 | 2605025 | 20 | 28 | 20 | 20 | 50 | 84 | 2 | 2 |
| 2605026 | 2605027 | 20 | 30 | 20 | 20 | 50 | 84 | 2 | 3 |

